

RCO360^o Product Page Content for Corp. Site

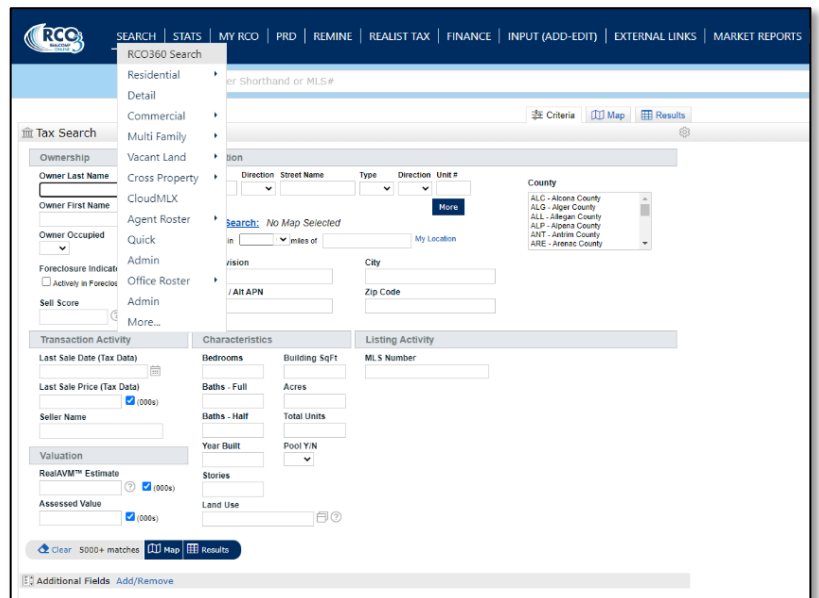


What is RCO360^o? It's a search option in the latest version of RCO3[®] that unifies **listing** and **Realist[®] property data**, allowing MLS Subscribers to search across both data sets simultaneously. The result is a truly property-centric search that gives you a 360-degree view of properties in your market.



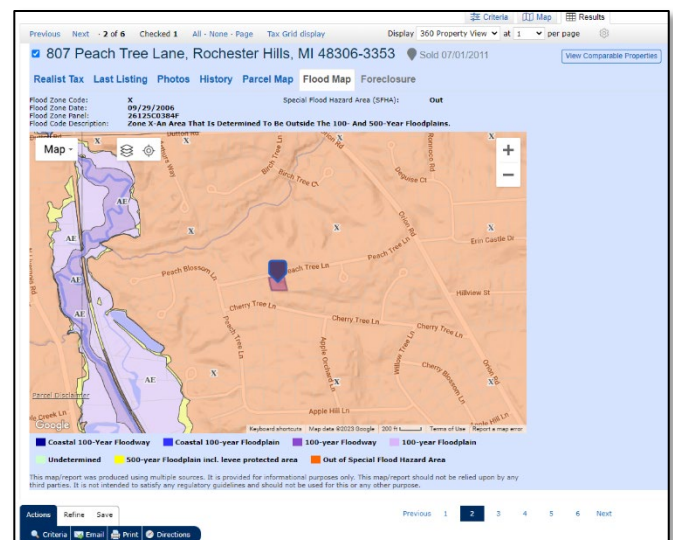
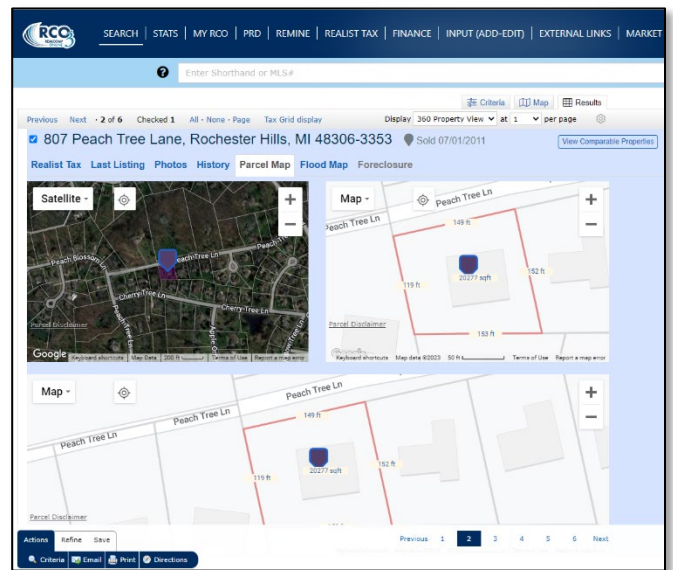
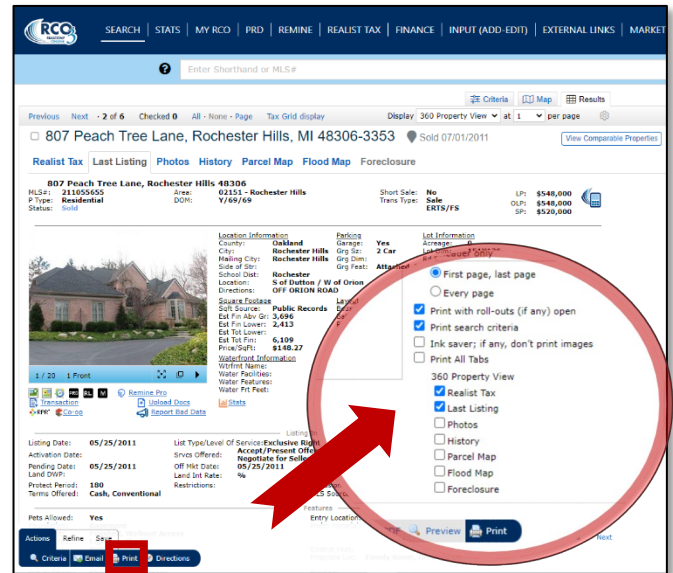
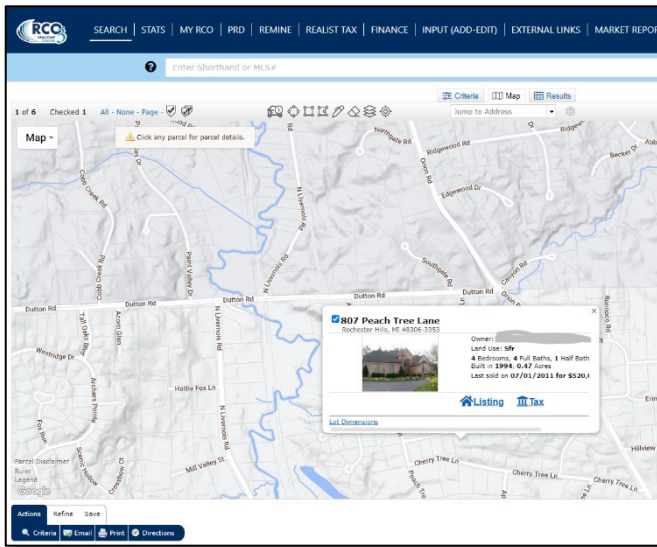
Benefits of RCO360^o include:

- More Efficient Workflow – Leverage Realist[®] tax data without launching a separate program and leaving the MLS workflow.
- Easy and Familiar – Search, view results, print and email reports for tax data the same way as listings. All searches and displays are created inside of RCO3[®]/Matrix providing a consistent and familiar user experience.
- Create a CMA (including On and Off-MLS Sales) by pulling comparable properties through the combination search.
- The HTML interface works well on computers and tablets – no plugins required.



The screenshot displays the RCO360 search interface. At the top, there is a navigation bar with links for SEARCH, STATS, MY RCO, PRD, REMINE, REALIST TAX, FINANCE, INPUT (ADD-EDIT), EXTERNAL LINKS, and MARKET REPORTS. Below this, the search criteria are defined, including a dropdown for 'RCO360 Search' (with options like Residential, Commercial, Multi Family, etc.), a search bar for 'Shortland or MLS #', and a 'Criteria' button. The search results are displayed in a table with columns for 'Direction', 'Street Name', 'Type', 'Direction', 'Unit #', and 'County'. The 'County' dropdown is currently set to 'ALC - Alameda County'. Below the search results, there are several sections for additional information: 'Transaction Activity' (Last Sale Date, Last Sale Price, Seller Name), 'Valuation' (RealAVM Estimate, Assessed Value), 'Characteristics' (Bedrooms, Building SqFt, Baths - Full, Baths - Half, Year Built, Stories, Land Use), and 'Listing Activity' (MLS Number). At the bottom, there is a 'Clear' button, a '5000+ matches' indicator, and a 'Map' button.

- A tax search is now available within RCO3[®] using the same fields as in Realist, but in a familiar RCO3[®]-style search form.
- Enjoy the stability and speed of RCO3[®]/Matrix.
- Complete property display includes current listing data, tax/assessment data, transaction/document history, area schools, flood data, and more. Users can choose which content to print.



- “Walk the block” to see the whole neighborhood. The interactive maps now display brief tax and listing information on the parcel where data is available. Users can zoom and pan, switch between street and satellite views, enable layers, and click on parcels to view neighboring property information. Comprehensive map overlays include flood, highlighted parcel, lot dimensions, valuations, sales activity, foreclosure activity, and more.
- FEMA Flood Zone information and a map of the property area showing the Flood overlay is available. The combined history shows all

listing activity for the property, as well as sale, mortgage, and foreclosure history from public records.

- Print mailing labels from tax data.

To access the RCO360^o search option, hover your mouse over the Search menu item and choose RCO360 Search.

RCO360^o (*also known as Matrix 360 by CoreLogic*) is a national product that has been vetted by hundreds of thousands of REALTORS[®] around the country. So, it's brand new to the Realcomp market (but not to the industry).

RCO360 Sub-Menu (at bottom of page):

- Articles
- Guides and Tip Sheets
- Videos and Webinars