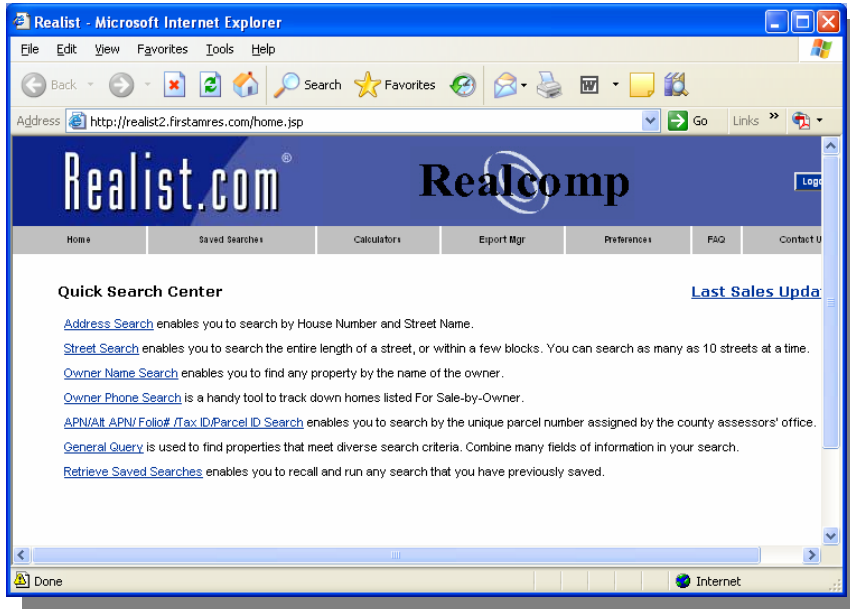


Realcomp Launches Realist®!

A New Public Record Data Option for MLS Subscribers



Realist® Features Include . . .

- Secondary Source of Public Record Data (PRD) for Realcomp MLS Subscribers
- The *User Preferences* Module Saves Your Preferences for Searching and Reporting
- Easy Report Customizations
- Access to Quick Comparables in PRD
- Phone Numbers Scrubbed Against the National Do-Not-Call Registry
- Search Up to 10 Streets at a Time
- Create Mailing Labels in a Snap!
- Create Mailing Labels for Your "Just Sold" Postcard Mailings to Neighbors
- Easy Data Export Utilities
- Frequently Asked Questions (FAQs)
- And MORE!

Realist® Training and Support . . .

Training on specific features of Realist® is available to MLS Subscribers through the *Realcomp Online® Public Record Database & Comparative Market Analysis Class*. Tip sheets for using the program are available on Realcomp's corporate website; www.realcomp.com.

To obtain Customer Care support on Realist®, contact us at (866) 553-3430 or via e-mail at support@realcomp.com.

What is Realist®? . . .

Realist® is a national public record data product of First American Real Estate Solutions™. Realcomp is the exclusive provider of the Realist® product for all of First American's MLS accounts across the state of Michigan.

For Realcomp Subscribers, the program is a second source of public record data which has been integrated with Realcomp *Online®*, our web-based MLS system.

Realist® delivers property data, maps, market information & more! Realcomp Subscribers can access Realist® two (2) different ways:

1. From the PRD (Public Record Data) menu of Realcomp *Online®*.
2. By doing a search from any of the county databases (*except for Lenawee and Grand Traverse counties*) and clicking the **R** hyperlink to reference Realist® details.

Price . . .

There are no additional fees for Realcomp MLS Subscribers to access Realist®!

